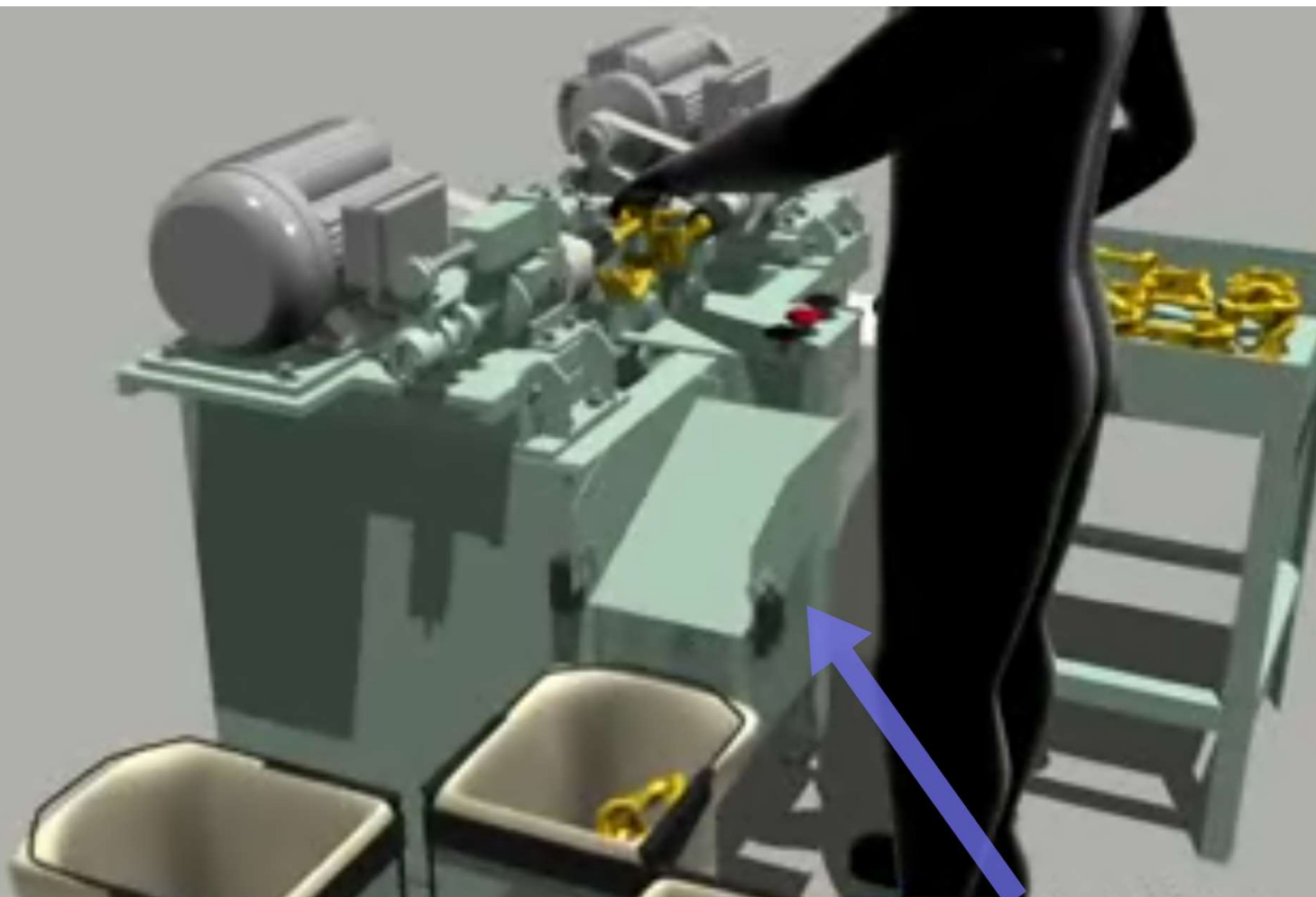
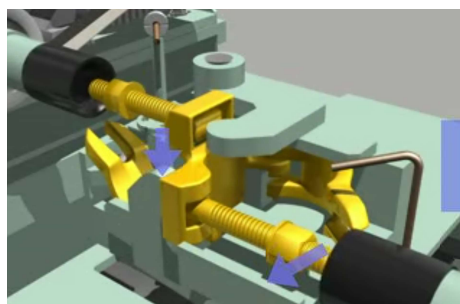


British Standard Clamp Maintenance Machine (Double-axis)

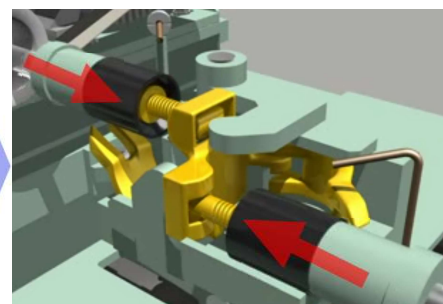


Automatic Rotary Packer
Rotating at Pre-set processed amount

Automatic Screw Cleaning & Greasing



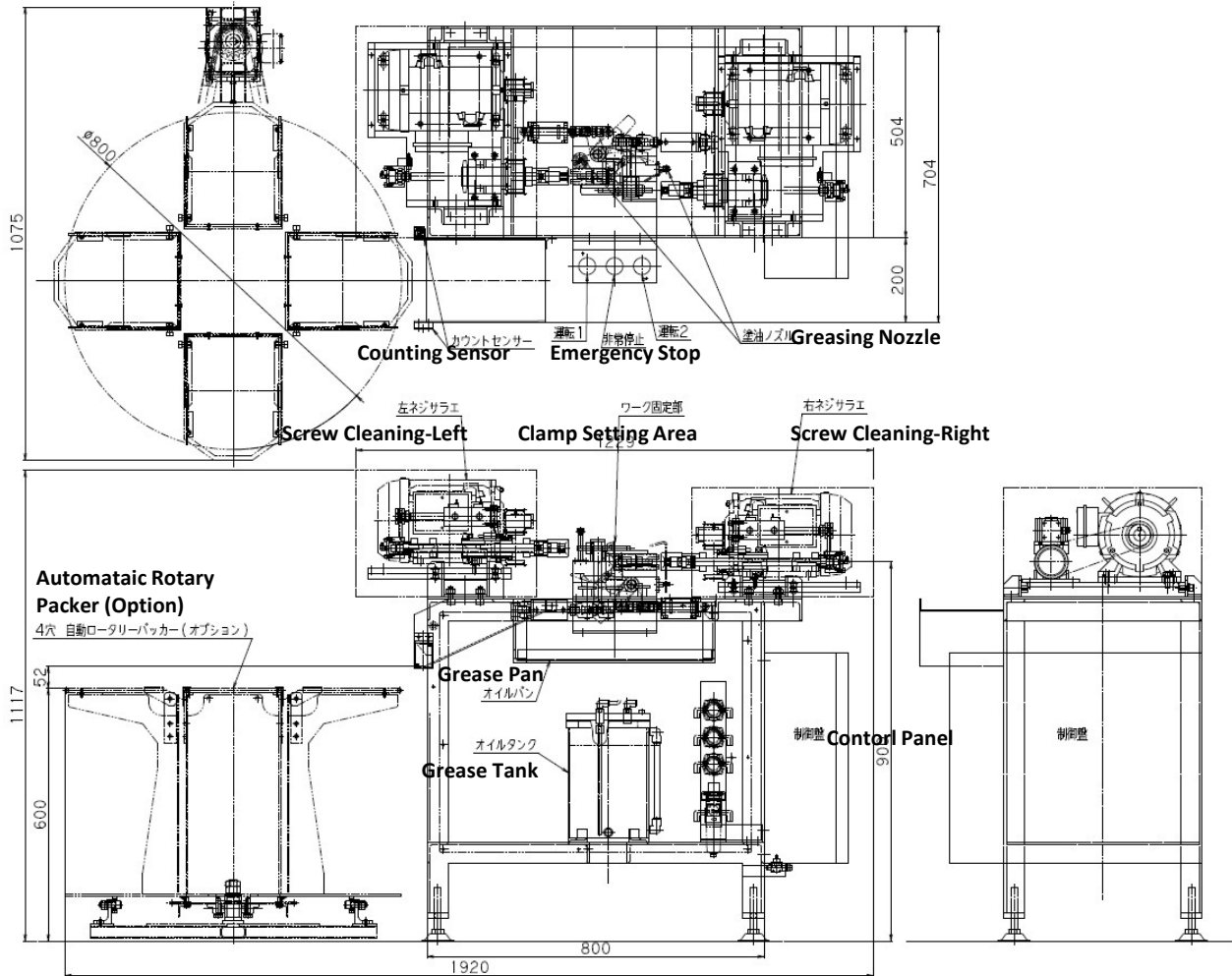
Discharging Shoot
Counting amount processed



■ Quick Process by 2-way simultaneous Screw Cleaning!

■ Can Process as many as **2,000pcs/day!**

British Standard Clamp Maintenance Machine (Double-axis)



Main Feature

Applicable Clamps	British Standard Clamps - Swivel/Fixed Type	
Operational Mechanism	Clamp Setting	Manual
	Clamp Discharge	
	Screw/Bolt Cleaning	Automatic
	Bolt Greasing	
	Counting Processed	
Spin	1 2 4 6 r p m	
Torque	1 6 . 6 6 N · m	
Motor Capacity	2 . 2 kW × 2	
Power Capacity	3-Phase A C 200/220V 4.4kW (Main Body)	
Rotary Packer	0 . 1 kW (Option)	
Air Compressor	0 . 7 5 kW Equivalent (Option)	