

Automatic frame cleaning and stacking system

TS series

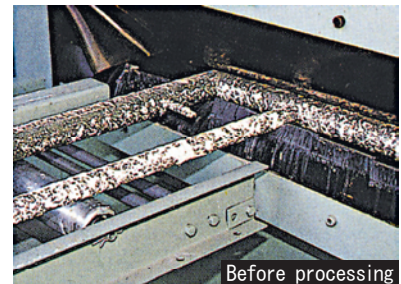
TS-I, II, and III types



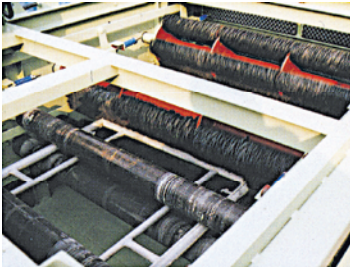
Powerful frame
cleaning machine
(TS-I type)

Cleans concrete deposits and resin-based stains.

The Taiyu Strong series eliminates deposits without damaging frame plating with a ring-type dresser. Based on the powerful TS-I type frame cleaning machine, the TS-II and III types are designed for high efficiency and labor-saving performance.

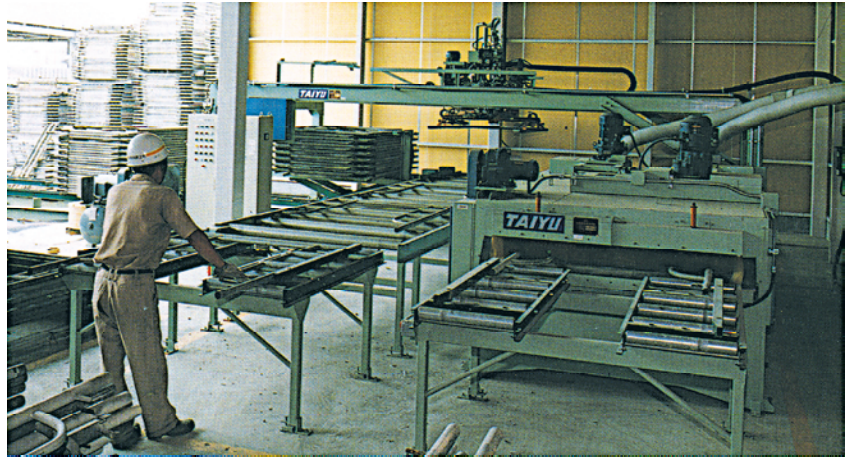


Based on the TS-I type for maximum efficiency and labor -saving performance.

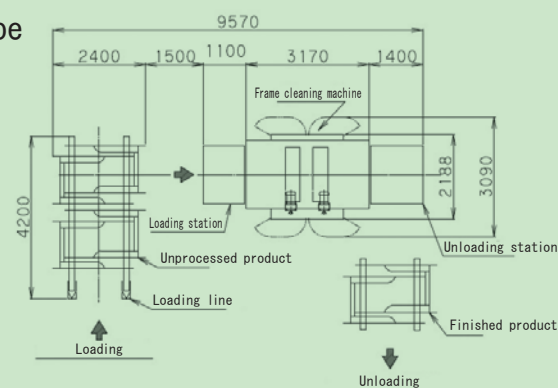


Ring-type dresser

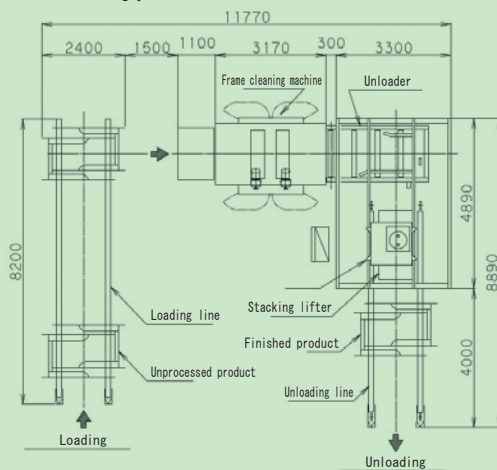
Dressers incorporate a special steel ring with an innovative design to clean the entire surface of the frame.



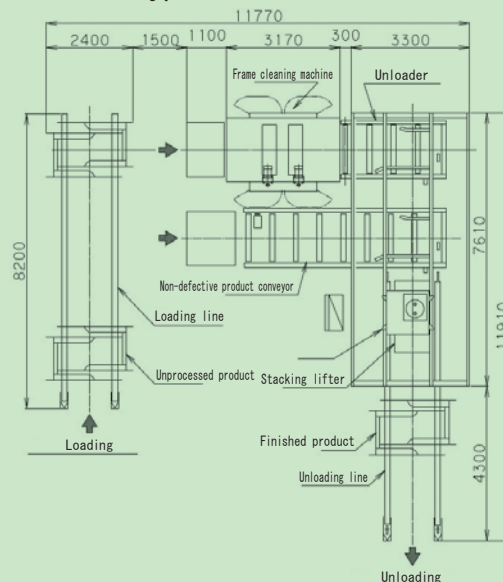
TS-I type



TS-II type



TS-III type



Specifications					
Model	Configuration		TS-I	TS-II	TS-III
			Cleaning line	Cleaning line stacking machine	Cleaning and non-defective product line stacking machine
Specified frame (mm)		Width	600·900·1200		
		Length	1700~1900		
Frame stacking height (mm)			φ42.7×25Stage×2Column=1067.5		
Cleaning capacity (theoretical: pieces/day)			840~1680※		
Maximum cleaning speed (m/min.)			12.0※		
Stacking machine capacity (theoretical: pieces/day)			—	1440	
Motor (all models) (kw)			8.15	12.4	13.0
Compressor (kw) (option)			—	5.5	
Dust collector (Option)			1.5		

※Specifications are subject to change without notice.

Remarks

- Cleaning speed shown at left* varies depending on the extent of dirt deposits.
- The TC-II PG type brings operation of the system close to theoretical performance by adding a non-defective product line.
- *The processing capacity (theoretical) shown at the left does not include handling and other processing time.
- Equipment is electronically controlled and must be supplied with a clean power with well-regulated voltage.
- Equipment requires a supply of dry air.