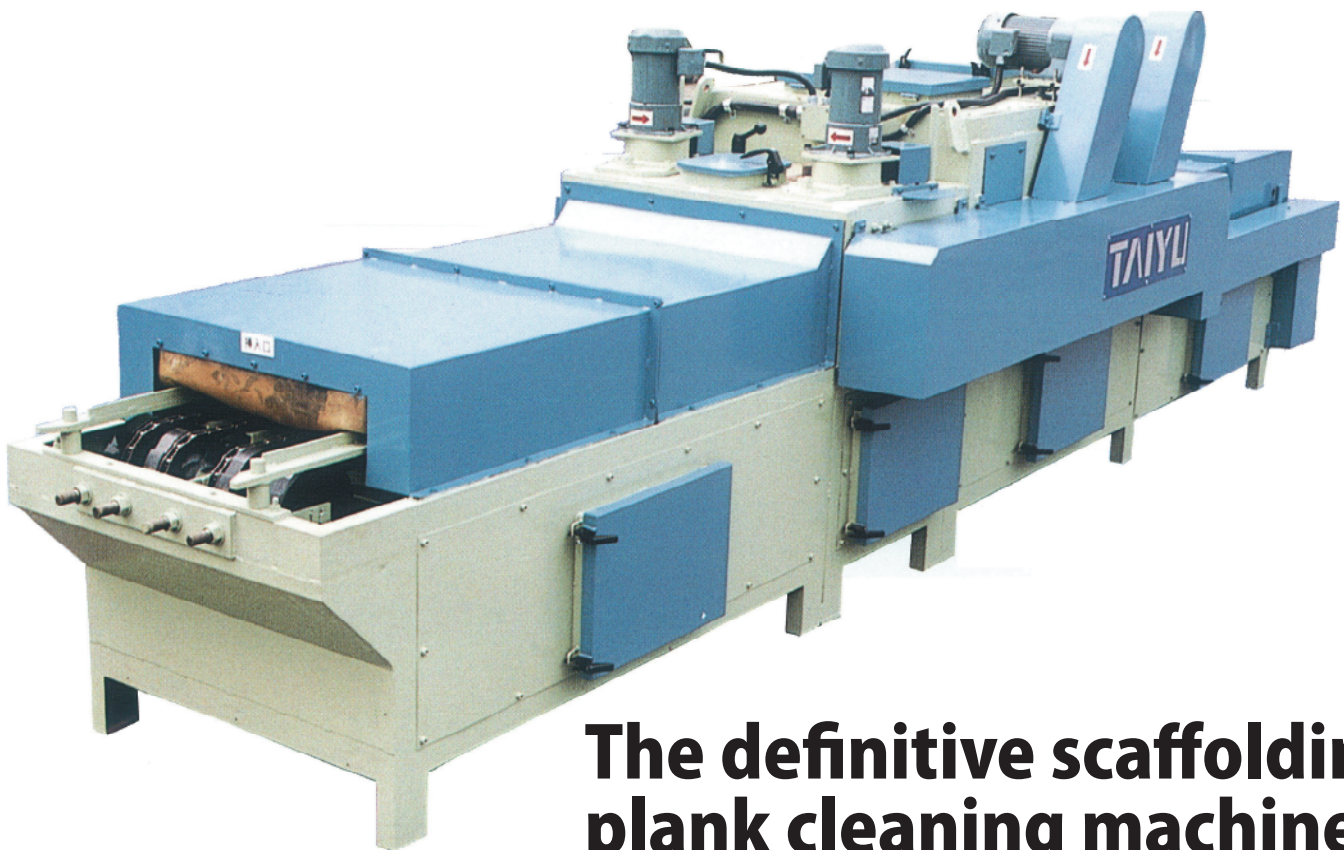


**With high-speed side cleaning function**

# Scaffolding plank cleaning machine

**TC-III type**



## The definitive scaffolding plank cleaning machine

Outstanding capacity and power that you have to experience to believe. Cleans sides and faceplates equally well.



Before cleaning



After cleaning



CREATIVE ENGINEERING

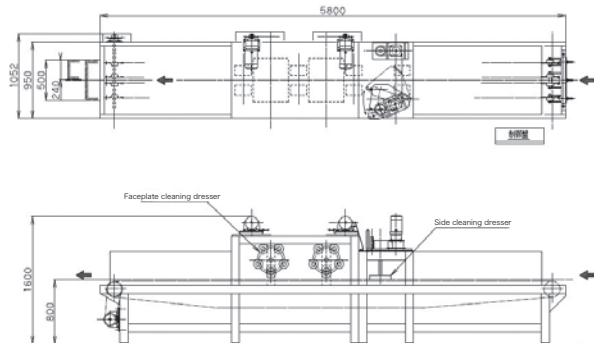
**TAIYU**

4-11-7 Simeno Neyagawa city, Osaka 572-0077, Japan  
Tel: +81-72-829-8101 Fax: +81-72-829-8121

Based on the TS-III type for maximum efficiency and labor-saving performance.

## Outer dimensions (L×W×H) (mm)

- Scaffolding plank cleaning machine with high-speed side cleaning function (TC-III type)



## Dressers

Dressers incorporate a special steel ring with an innovative design that enables them to clean effectively without damaging workpieces. Special steel rings offer superior wear resistance and can be used for a long period of time.

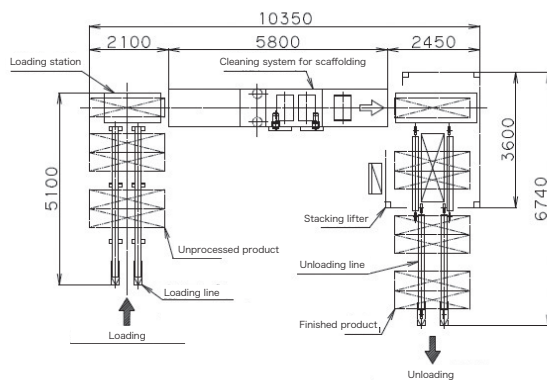


Faceplate cleaning dresser

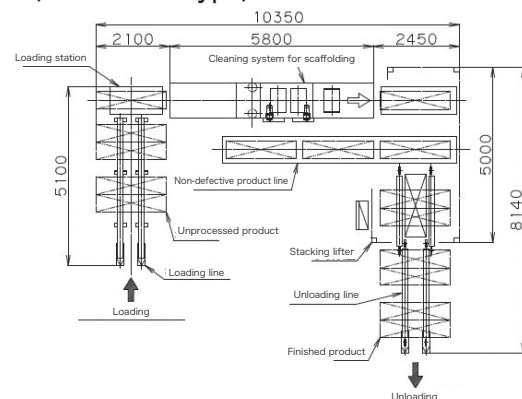


Side cleaning dresser

- Cleaning and stacking system with high-speed side cleaning function (TC-III P type)



- Cleaning and stacking system with high-speed side scraping function (TC-III PG type)



## Specifications

Method		Cleaning system for scaffolding	Cleaning and stacking system for scaffolding	
		TC-Ⅲ type	TC-ⅢP type	TC-ⅢPG type
Component		With high-speed side cleaning function	Stacking system with high-speed side cleaning function	Stacking system with high-speed side cleaning function and non-defective product line
	Dresser	Dresser（Faceplate cleaning: 2-axis Side cleaning: 2-axis）		
Specified scaffolding planks (mm)	catwalks	Thickness: 30 to 60 mm; width: 240 or 500 mm; length: 900 to 4,000 mm	Thickness 30~60 width 240~500 length 900~1,800	
	long workpieces		Specifications are customizable to accommodate long workpieces.	
Cleaning capacity (theoretical; pieces/day)	catwalks	※1,040~2,080	※1,040~2,080	
	long workpieces		※520~1,040(Special specifications)	
	Cleaning speed (m/min.)	※4.3~8.6	※4.3~8.6	
Stacking capacity (theoretical; pieces/day)		—	1,920	
Motor (all models) (kw)		4.9	9.53	9.93
Compressor (kw) (option)		—	5.5	
Dust collector (kw) (option)		1.5		

※Specifications are subject to change without notice.

- Remarks
- The speeds indicated above※ can be varied based on the extent of dirt deposits
  - The TC-III PG type brings operation of the system close to theoretical performance by adding a non-defective product line.
  - The processing capacity (theoretical) shown above does not include handling and other processing time.
  - Equipment is electronically controlled and must be supplied with a clean power with well-regulated voltage.
  - Equipment requires a supply of dry air.