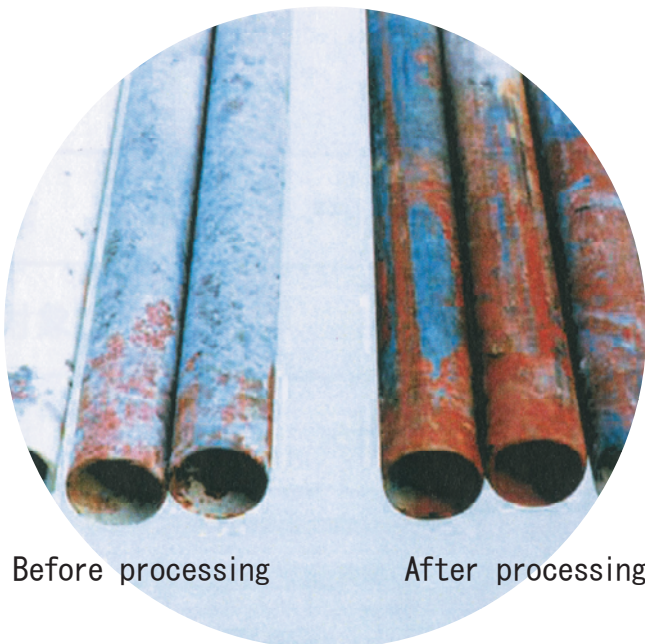


High-efficiency pipe cleaning machine

TP-C type

Taiyu Pipe Cleaner



TP-C type

The TP-C's processing capacity is approximately five times that of conventional pipe cleaning machines, and it can eliminate resin-based stains (resin and thick spray-on coatings) as well as concrete deposits.

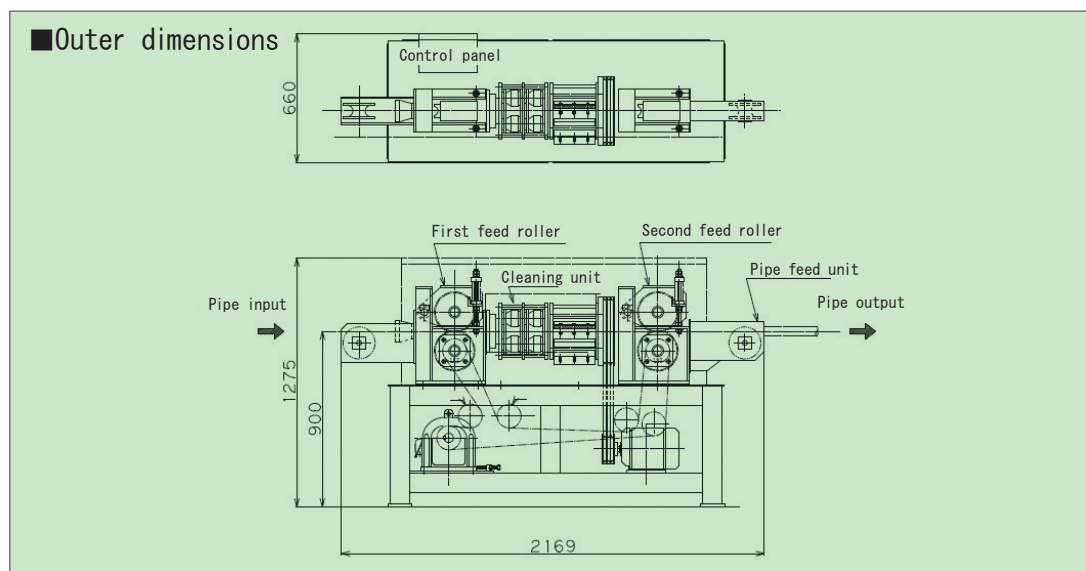
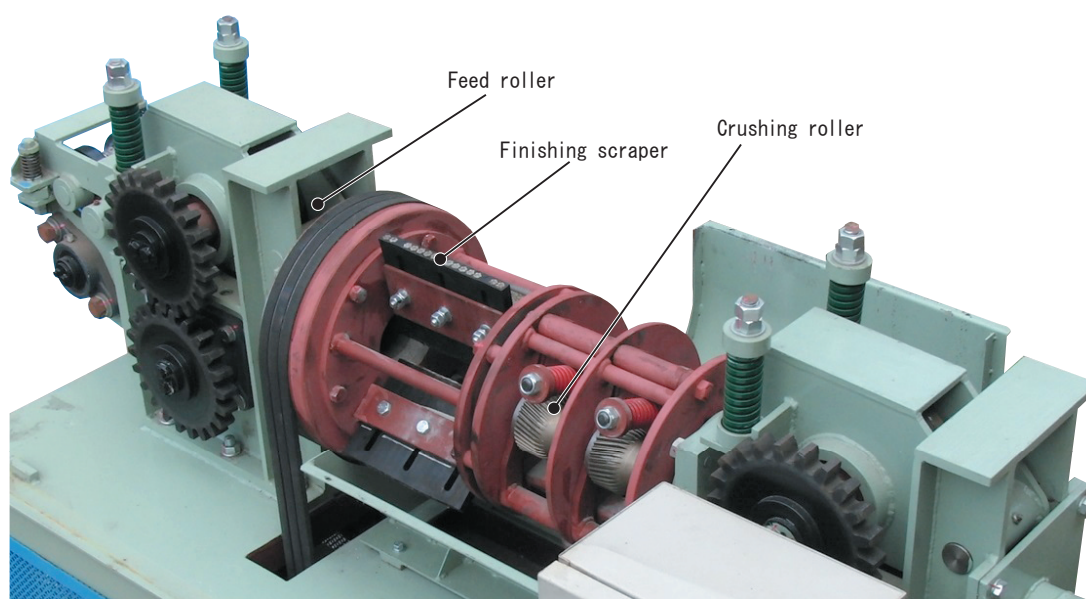


CREATIVE ENGINEERING

TAIYU

4-11-7 Simeno Neyagawa city, Osaka 572-0077, Japan
Tel: +81-72-829-8101 Fax: +81-72-829-8121

Processes deposits, ranging from concrete to resin-based material, at a speed that is approximately five times faster than conventional speeds.



■Cleaning method

The feed roller section crushes concrete deposits, and the deposits are removed when they pass through the center of the rotating drum, which has a crushing roller section and special scraper (rubber scraper incorporating wire).

■Features

- The TP-C ensures that pipe surfaces remain free of abrasion and scratches and that the metal structure inside pipes remains free of damage while delivering five times the processing power of conventional machines.
- The processing speed can be changed according to the extent of deposits using a switch on the operation panel.
- All machine components are equipped with covers to ensure safety.
- The rollers and other main components are designed with materials such as wear-resistant metal to withstand years of use.

■Specifications

| Type | | TP-C type |
|----------------------------|--------------------|-------------------------------|
| Specified pipe | Diameter×thickness | φ48.6×2.4mm |
| | Length | 1m or more |
| Motor | For cleaning | 3.7KW-220/200V |
| | For feeding | 2.2KW 1/20 220/200V |
| Processing speed | | Standard:30m/min. |
| Outer dimensions (L×W×H)mm | | 2000×650×1285 (with cover) |
| Gross weight | | 850kg |
| Pass line | | 880mm (height of pipe center) |

※Specifications are subject to change without notice.

※Machine processing capacity figures indicate the capacity of the machine itself. Handling and other process times are not included.